

Leighton Hospital Emergency Department Monthly Bulletin: January to December 2010

This bulletin provides a breakdown of all injury attendances at Leighton Hospital Emergency Department (ED) between January and December 2010.

Between January and December 2010 there were 39,169 injury attendances. Injury attendances peaked in June (n=3,829), with February (n=2,454) having the least number of injury attendances (**Figure 1**).

For all months there were more male injury attendances than female presenting at Leighton Hospital ED (55%).

Figure 2 presents the age group of injury attendances. Across the whole year the majority of injury attendances were made by individuals aged 30-59 years.

Table 1 details the injury group of injury attendances. The majority of injury attendances

were classified as 'other injury' (86%); 5% were recorded as road traffic collisions (RTCs) and 3% assaults.

Table 2 illustrates the source of referral for patients presenting with injuries. The majority (71%) of injury attendees self-referred.

Table 3 presents injury attendances by location of incident. A third (33%) were recorded as occurring in a public place and 29% in the home.

Table 4 shows the discharge destination of injury attendances. Almost seven in ten of attendees were discharged (68%).

Assault attendees presenting at Leighton Hospital ED between January and December 2010 were mainly male (72%) and the majority (44%) were aged between 18 and 29 years of age. **Table 5** shows the primary location of assault was recorded as occurring in a public place (41%).

Figure 1: Gender of injury attendances by month, January to December 2010

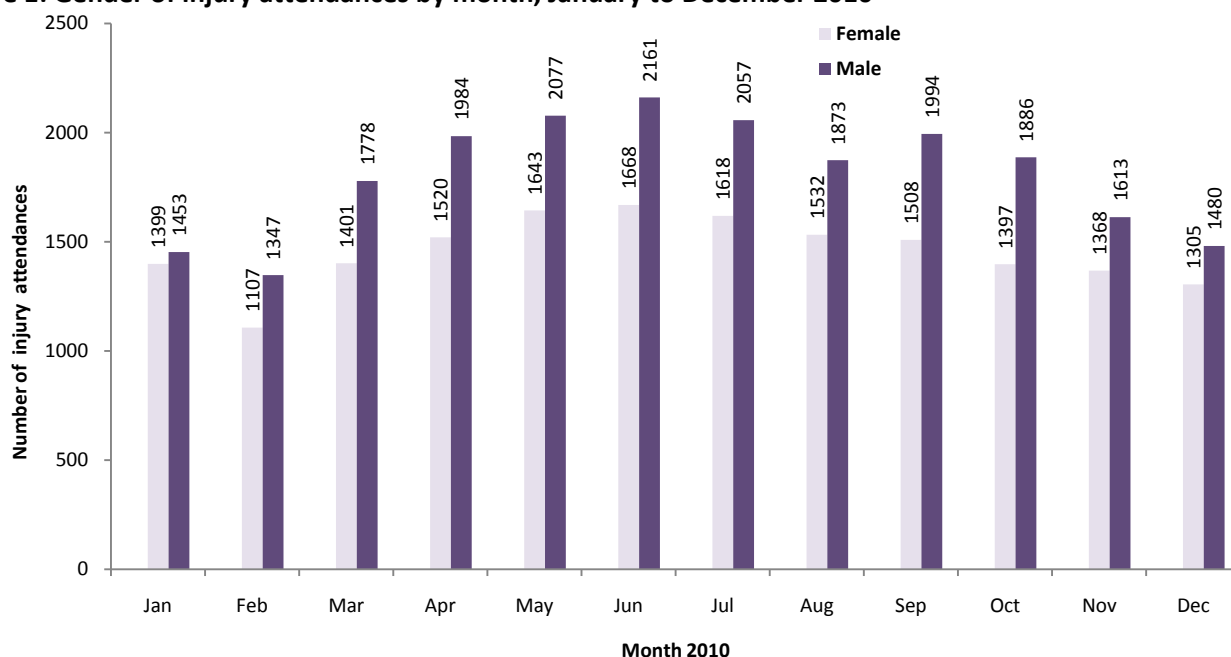


Figure 2: Age group of injury attendances by month, January to December 2010

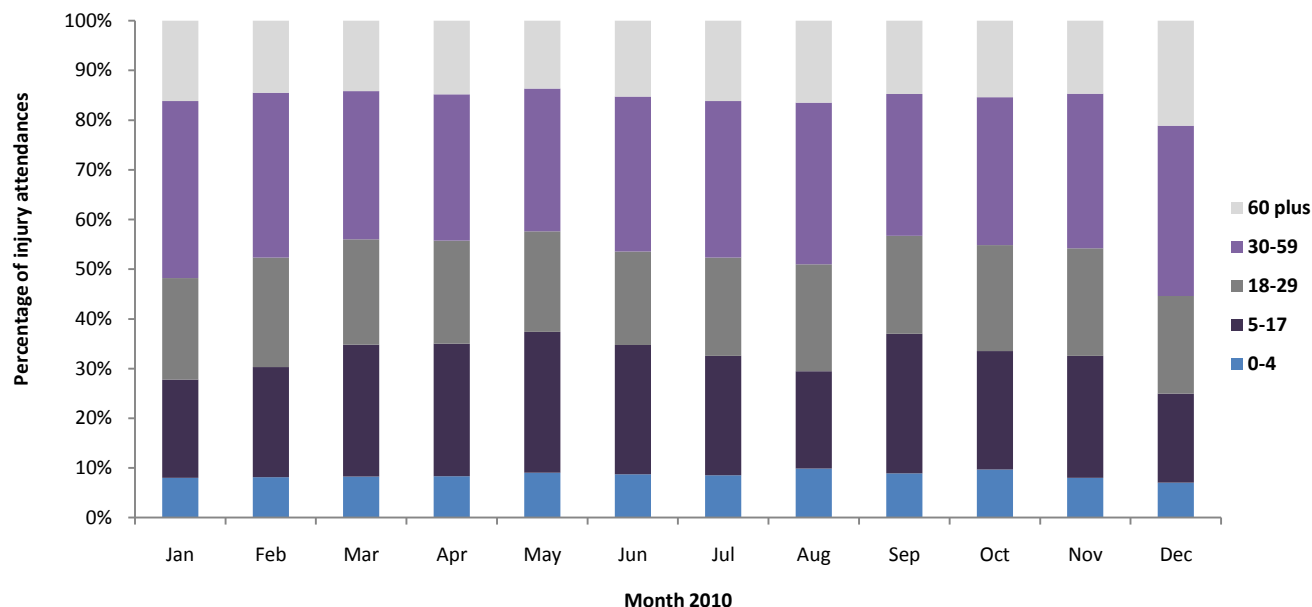


Table 1: Injury attendances by injury group, January to December 2010¹²

Injury group	Jan	Feb	Mar	Apr	May	Jun	Jul	Aug	Sep	Oct	Nov	Dec	Total	%
Other Injury	2486	2095	2774	3023	3242	3393	3228	2906	3005	2772	2493	2432	33849	86%
RTC	145	152	153	169	214	152	144	185	177	213	218	177	2099	5%
Assault	83	84	94	107	91	99	95	126	116	97	101	85	1178	3%
Sports injury	66	62	84	89	69	62	66	61	100	125	101	20	905	2%
Deliberate self-harm	59	47	57	81	66	61	51	62	54	48	49	52	687	2%
Bites/stings	13	14	17	35	38	62	91	65	50	28	19	19	451	1%
Total	2852	2454	3179	3504	3720	3829	3675	3405	3502	3283	2981	2785	39169	100%

Table 2: Injury attendances by source of referral, January to December 2010

Source of referral	Jan	Feb	Mar	Apr	May	Jun	Jul	Aug	Sep	Oct	Nov	Dec	Total	%
Self referral	2116	1765	2294	2606	2759	2745	2656	2548	2365	2184	1960	1897	27895	71
Other	252	234	366	385	373	448	444	350	478	499	466	319	4614	12
Emergency services	288	264	325	321	390	361	318	361	369	343	347	368	4055	10
Educational establishment	41	44	57	36	47	64	58	***	83	80	69	60	641	2
Work	46	57	31	29	35	63	63	31	63	56	51	45	570	1
Referred from minor injuries unit	28	17	41	54	45	59	45	50	60	55	43	28	525	1
General practitioner	36	36	34	33	19	40	30	22	28	25	14	24	341	1
NHS direct	15	11	5	16	***	17	13	***	17	16	***	7	141	0
Police	15	15	5	***	12	***	***	11	13	***	8	19	130	0
Unknown	9	***	17	6	18	11	16	11	***	9	7	11	130	0
Health care provider	***	6	***	13	13	11	21	10	16	7	10	***	123	0
Local authority social services	***	***	***	***	***	***	***	***	***	***	***	***	***	0
Total	2852	2454	3179	3504	3720	3829	3675	3405	3502	3283	2981	2785	39169	100

¹ *** Please note that all numbers less than five have been suppressed in line with patient confidentiality and if there is only one number in a category then two numbers will be suppressed at the next level (e.g. <6) in order to prevent back calculations from totals.

² *** Due to low numbers and patient confidentiality firework injuries have been categorised under other injury

Table 3: Injury attendances by location of incident, January to December 2010

Incident location	Jan	Feb	Mar	Apr	May	Jun	Jul	Aug	Sep	Oct	Nov	Dec	Total	%
Public place	1039	744	967	1186	1163	1240	1235	1162	1130	1080	916	950	12812	33
Home	787	674	934	1011	1130	1126	1070	987	1041	969	865	785	11379	29
Unknown	548	514	630	683	689	754	621	799	545	499	406	463	7151	18
Work	200	217	238	239	247	253	266	203	272	263	277	214	2889	7
Other	149	153	190	213	261	277	328	240	219	206	222	199	2657	7
Educational establishment	129	152	220	172	230	179	155	14	295	266	295	174	2281	6
Total	2852	2454	3179	3504	3720	3829	3675	3405	3502	3283	2981	2785	39169	100

Table 4: Injury attendances by discharge destination, January to December 2010

Discharge destination	Jan	Feb	Mar	Apr	May	Jun	Jul	Aug	Sep	Oct	Nov	Dec	Total	%
Discharged	1816	1699	2182	2352	2606	2583	2455	2393	2446	2270	2041	1754	26597	68
Referred	924	658	864	971	947	1054	1062	906	937	903	837	910	10973	28
Other	55	37	54	99	94	86	110	63	77	63	67	82	887	2
Admitted	57	60	79	82	73	106	48	43	42	47	36	39	712	2
Unknown	***	***	***	***	***	***	***	***	***	***	***	***	***	0
Total	2852	2454	3179	3504	3720	3829	3675	3405	3502	3283	2981	2785	39169	100

Table 5: Location of assault for assault attendances, January to December 2010

Assault location	Jan	Feb	Mar	Apr	May	Jun	Jul	Aug	Sep	Oct	Nov	Dec	Total	%
Public place	40	38	45	49	37	32	47	48	36	39	44	31	486	41
Unknown	17	17	18	21	15	29	22	37	35	22	13	16	262	22
Home	14	17	20	25	24	25	14	32	27	18	21	18	255	22
Other	***	7	5	***	11	6	6	6	8	9	9	10	84	7
Work	***	***	***	7	***	5	***	***	***	***	6	***	46	4
Educational establishment	***	***	***	***	***	***	***	***	6	6	8	7	45	4
Total	83	84	94	107	91	99	95	126	116	97	101	85	1178	100

Published January 2011

Jennifer Brizell (Merseyside and Cheshire TIIG officer)

Centre for Public Health, Faculty of Health and Applied Social Sciences, Liverpool John Moores University

3rd Floor, Henry Cotton Campus, 15-21 Webster Street, Liverpool, L3 2ET

Tel: 0151 231 4500 Email: j.s.brizell@ljmu.ac.ukWebsite: www.tiig.info (please note all data requests should be made through the TIIG website)